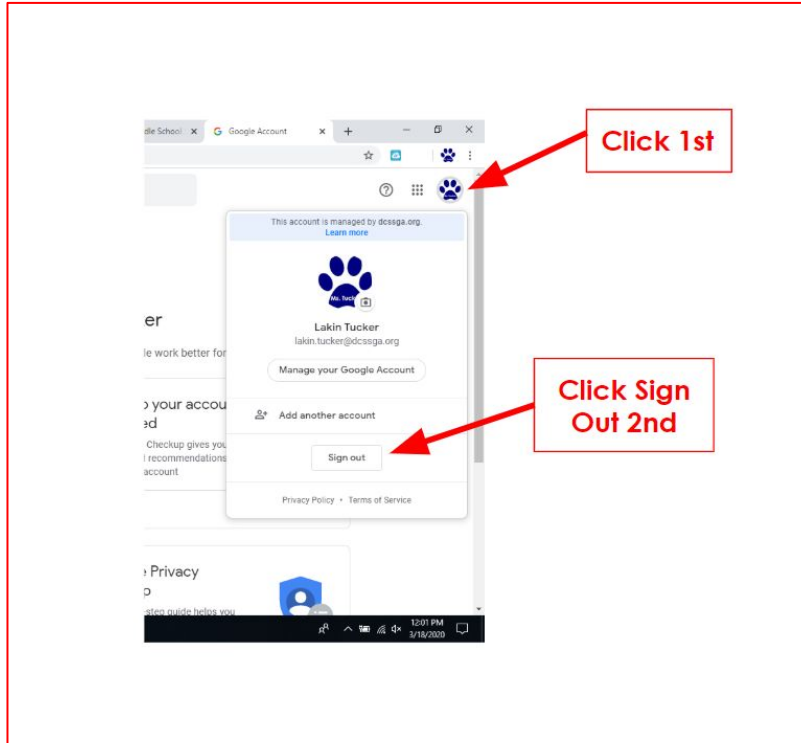


Google Classroom Helpful Hints



1) How to Sign Out of your personal google account



- Click the icon (top right) of your browser.
- Click Sign Out
- You are now signed out of your personal google account

2) How to log into your school account

There are two ways to log into your school account:

1) Go to googleclassroom.com or download the google classroom app

Enter the following:

Email: firstname.lastname@s.dcssga.org

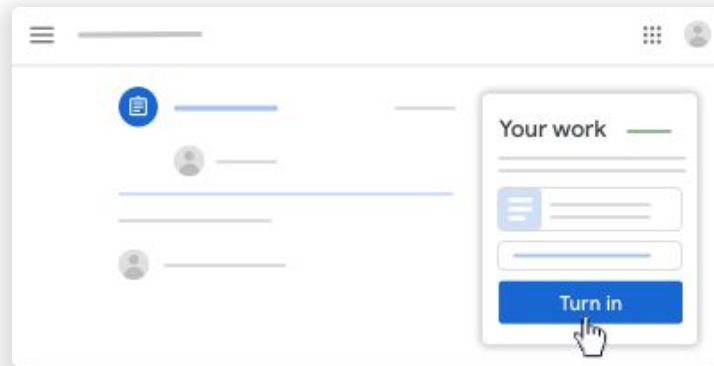
Password: **School computer password**

2) You can go to portal.dcssga.org and use your **school computer login**.

This will bring you to Classlink where you will have all of your apps. Just make sure you are logged out of your personal Google account first.

3) How to turn in an assignment on Google Classroom

- If your assignment page only says *share*, EXIT out of the assignment
- Go back to the assignment page
- Click **Turn In**
- Make sure (on your screen) that your assignment says turned in



***Do not share the assignment or request for your assignment to be edited.*